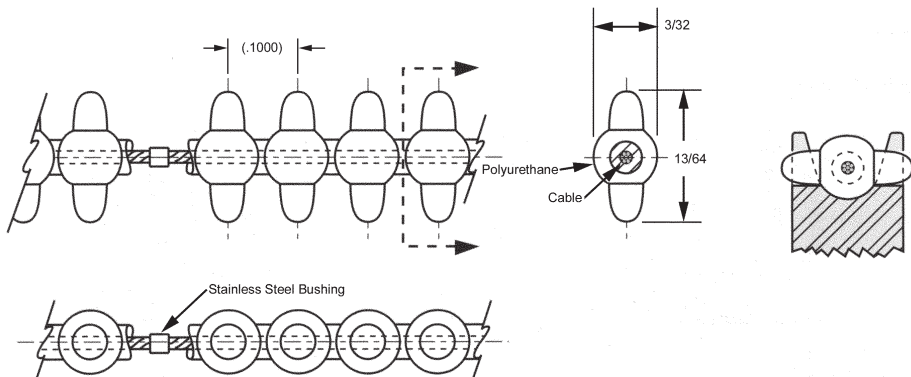


GEAR DRIVE BELTS

PITCH	CIRCULAR PITCH	MATERIALS	BERG'S® NAME	PULLEY
1/10	.1000	Polyurethane (Red) 1/32" Dia. Stainless Steel Cable*	Flex-E-Belt®	Operates with GP31 and GF31 series.



STOCK NO.	NO. OF PITCHES	LENGTH (Ref.)
31GBF-50-E	50	5.000
31GBF-52-E	52	5.200
31GBF-54-E	54	5.400
31GBF-56-E	56	5.600
31GBF-58-E	58	5.800
31GBF-60-E	60	6.000
31GBF-65-E	65	6.500
31GBF-70-E	70	7.000
31GBF-75-E	75	7.500
31GBF-80-E	80	8.000
31GBF-85-E	85	8.500
31GBF-90-E	90	9.000
31GBF-100-E	100	10.000
31GBF-110-E	110	11.000
31GBF-120-E	120	12.000
31GBF-130-E	130	13.000
31GBF-140-E	140	14.000
31GBF-150-E	150	15.000
31GBF-160-E	160	16.000
31GBF-170-E	170	17.000
31GBF-180-E	180	18.000
31GBF-190-E	190	19.000
31GBF-200-E	200	20.000
31GBF-210-E	210	21.000
31GBF-220-E	220	22.000
31GBF-230-E	230	23.000
31GBF-240-E	240	24.000
31GBF-250-E	250	25.000
31GBF-260-E	260	26.000
31GBF-270-E	270	27.000
31GBF-280-E	280	28.000
31GBF-300-E	300	30.000
31GBF-350-E	350	35.000
31GBF-400-E	400	40.000
31GBF-480-E	480	48.000
31GBF-500-E	500	50.000
31GBF-800-E	800	80.000

- For Field Splice Kit order 32GBF-7.
- * Available with Aramid Core. See page VII for alternative belt construction or reverse bending applications.
- ** Reduce operating load rating by 50% for field splices.
- Odd Angles
- Infinite Lengths
- Accommodates twists and turns
- Positive Drive
- Zero Backlash
- No Lubrication
- Weight .11 oz./ft.
- 90A Durometer
- Ultimate Tensile Strength 50 lbs. - 8 lbs./Pin when belt is used in open loop configuration (without splice, no crimp bushing).
- Temperature Range +180°F to -15°F
- Recommended Operating Load 12 lbs.
- Recommended Max. Operating Speed 376 feet/min.

BULK FOOTAGE - NOT SPLICED	
STOCK NO.	LENGTH
31GBF-5FT	5 FT
31GBF-10FT	10 FT
31GBF-25FT	25 FT
31GBF-50FT	50 FT
31GBF-100FT	100 FT

